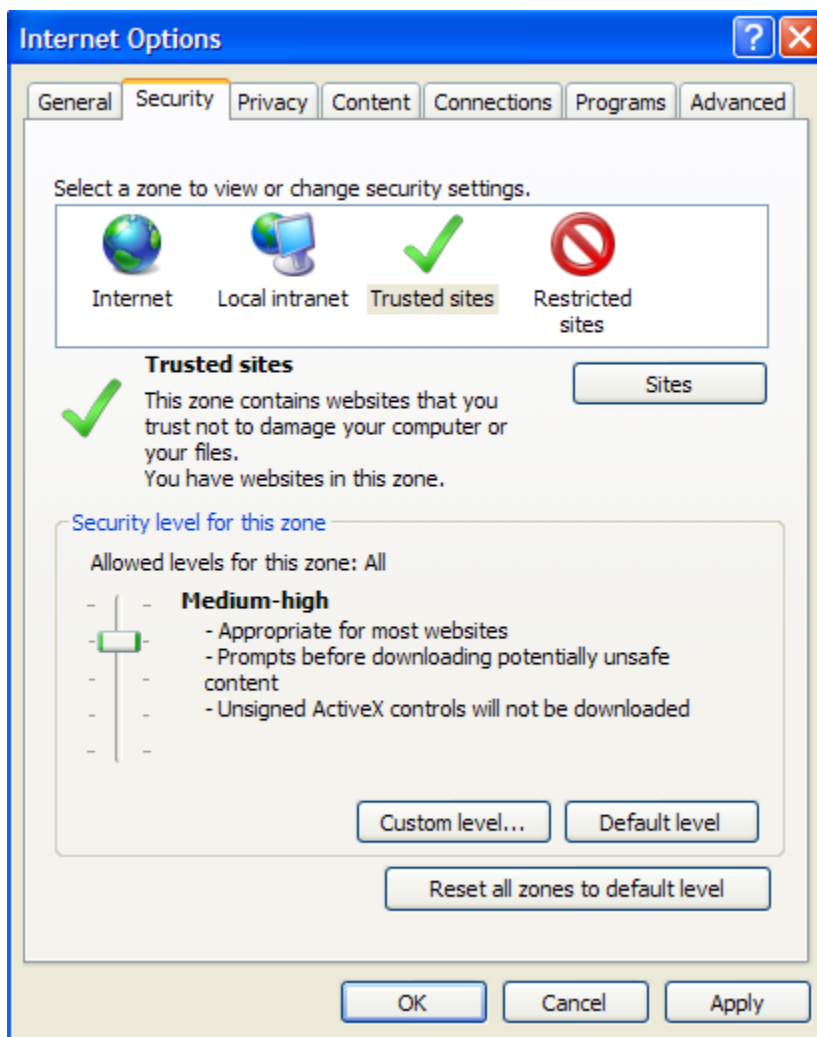


In order to avoid security warnings and other errors when using the CANS web application, add the site to your browser's list of Trusted Sites / Exceptions. Follow the steps appropriate for your web browser.

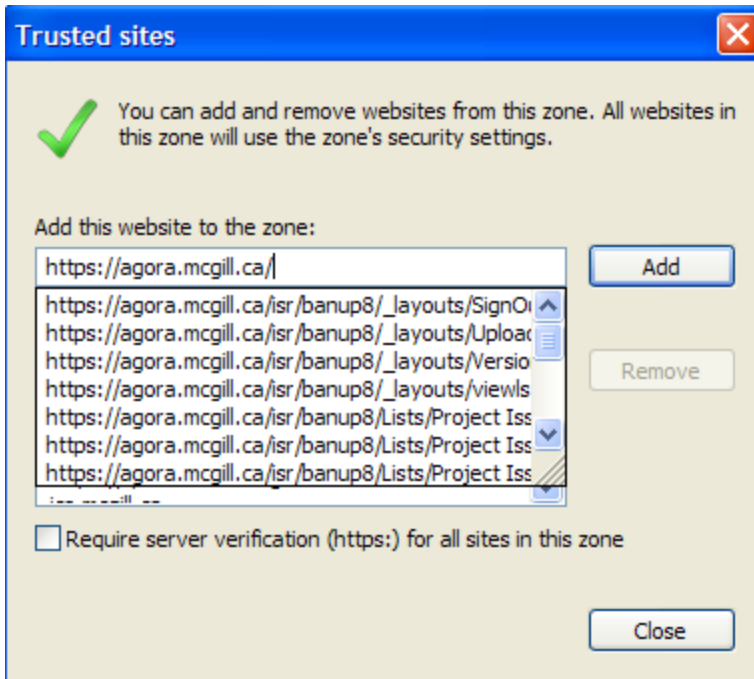
Internet Explorer

Note: depending on your operating system and version of IE, your interface may appear slightly different than what is shown in the screenshots. However, the steps remain the same.

1. Go to the **Tools menu (gear icon) > Internet Options > Security**.
2. Click the **Trusted Sites** icon, then click **Sites**.



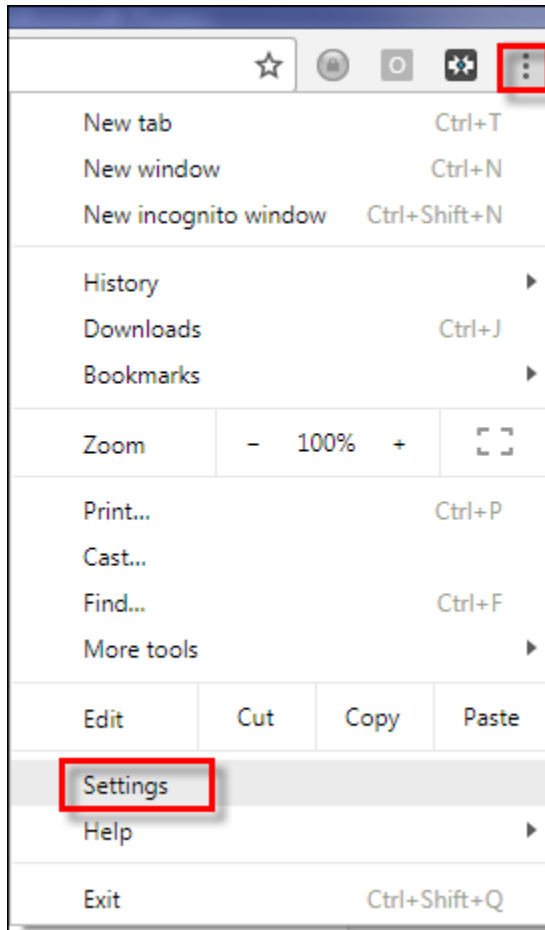
3. Enter the URL of your Trusted Site, then click **Add**.



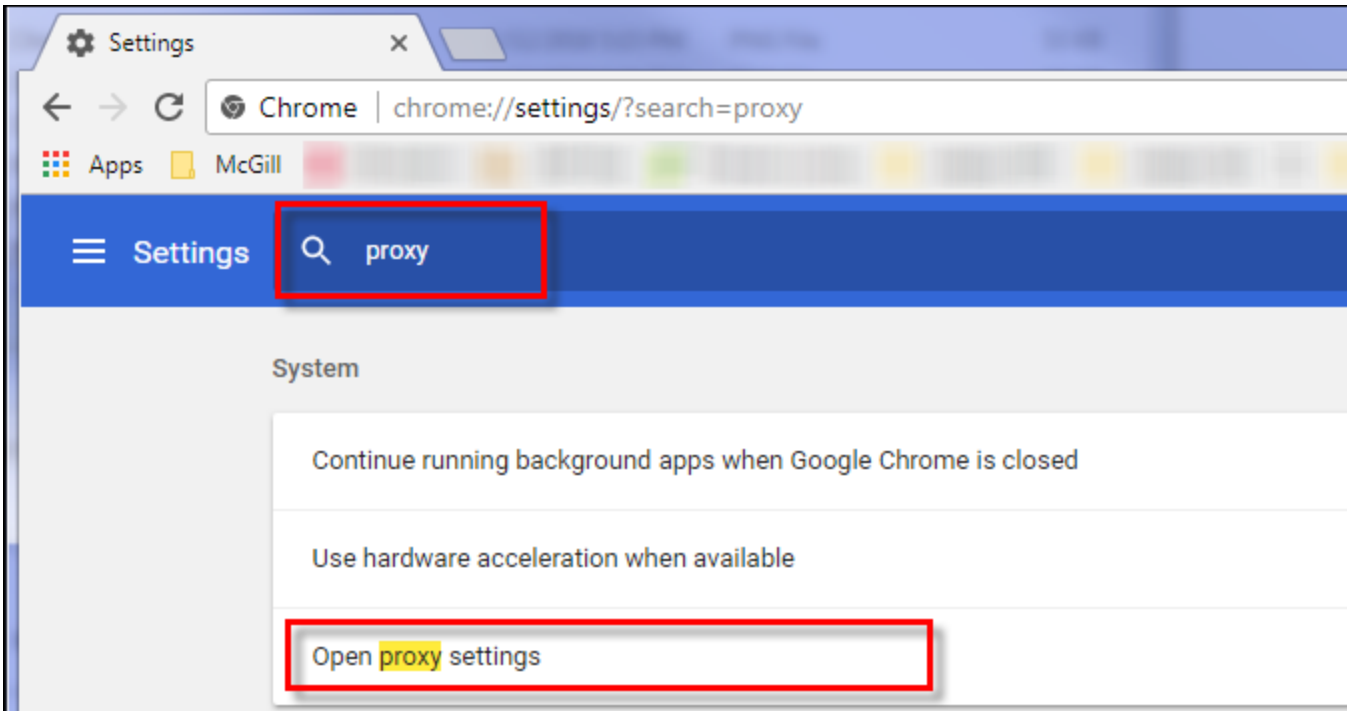
4. Click **Close**.

Google Chrome

1. Click the **Options** icon (three dots) on the far right of the address bar, and select **Settings**



2. In the search box at the top of the window, type "proxy"; then select **Open proxy settings**.



On Windows, the **Internet Properties** dialog box will open.

3. Click the **Security** tab > **Trusted Sites** icon, then click **Sites**.
4. Enter the URL of your Trusted Site, then click **Add**.
5. Click **Close** > **OK**.